



CRITERION 6

SSR CYCLE IV

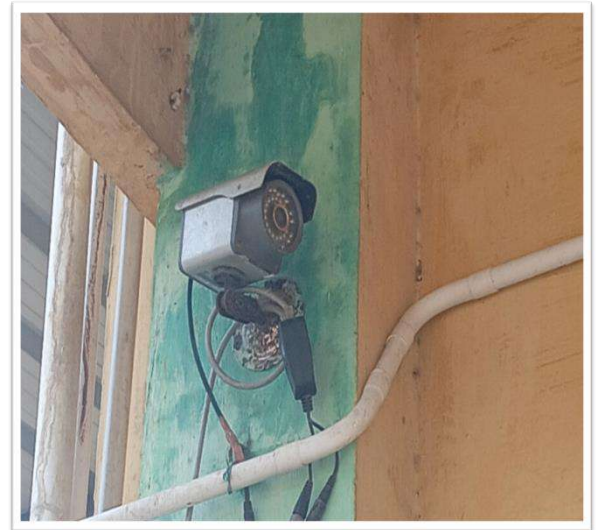
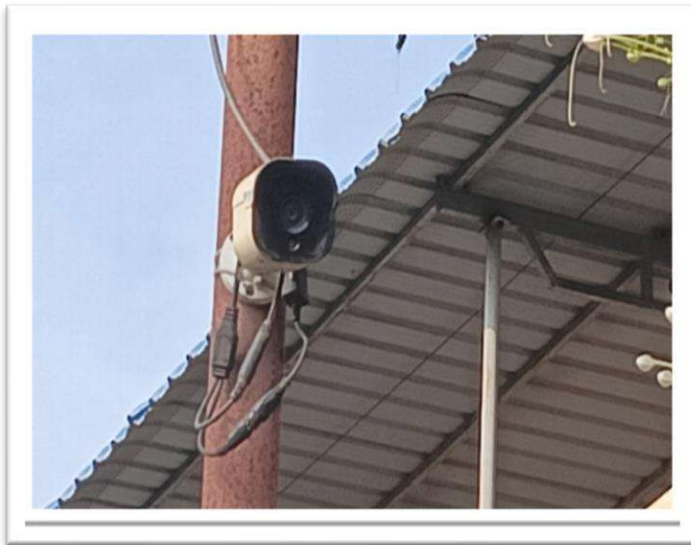
GOVERNANCE, LEADERSHIP AND MANAGEMENT

6.2. Strategy Development and Deployment

6.2.2: Institution implements e-governance in its operations

- 1. Administration**
- 2. Finance and Accounts**
- 3. Student Admission and Support**
- 4. Examination**

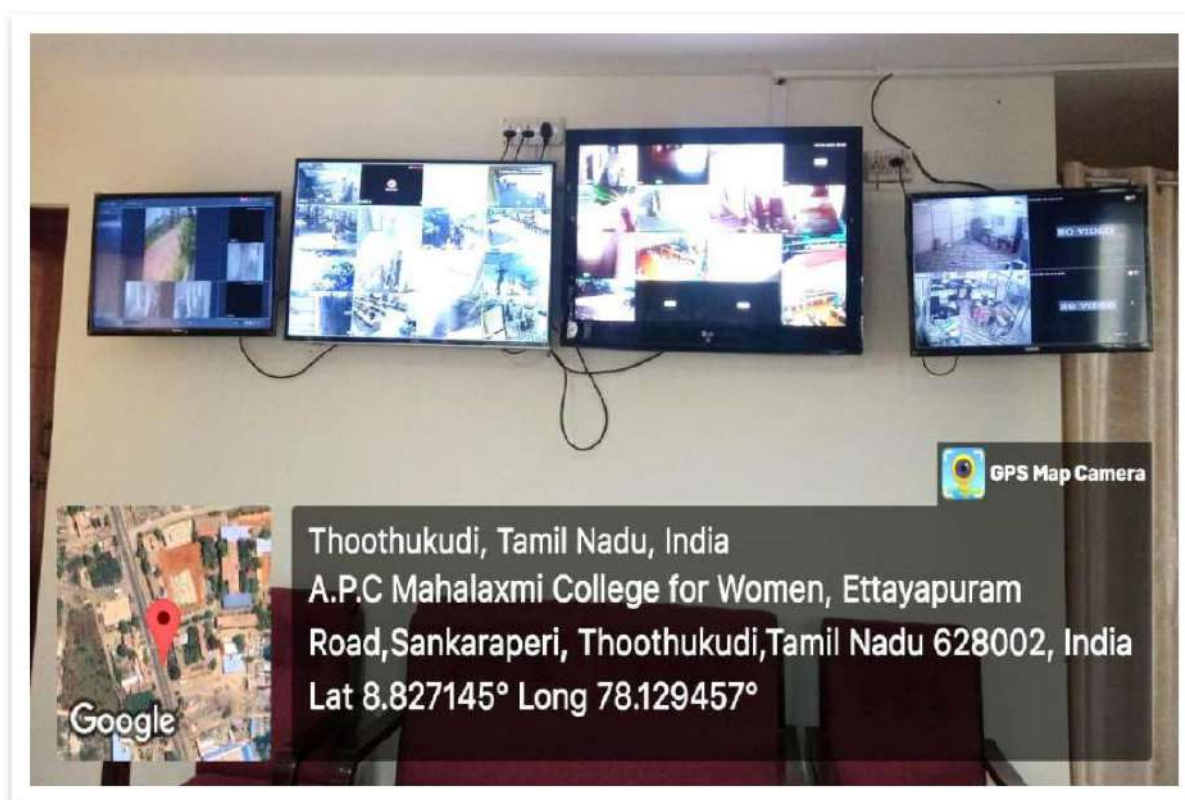
Security Services -CCTV Surveillance



CCTV Cameras placed in various places of campus



CCTV facilities within the campus



CCTV camera display at Principal's room